

2014 System Design and Parts Guide

Telescoping • In-ground • Rail • HVLS Fans



JohnDow
EuroVent[®]
Vehicle Exhaust Extraction

Table of Contents

"Rail" Type Systems	
Aluminum Exhaust Rail.....	3
Aluminum Rail Accessories	4
Mounting Brackets	5
Sliding Crabs & Accessories.....	6
Underground Exhaust Systems	7
Overhead Exhaust Systems	8
Exhaust Hose & Accessories	9
QuickLink™ Tailpipe Adapters	10-11
Tailpipe Adapters	12
"Fixed" Hose Reels	13
Fans & Fan Accessories	14-15
WindStorm Fans	16-17
Portable Exhaust Extraction Systems	18

EuroVent Warranty

EuroVent products listed in this catalog (except aluminum rail and neoprene seal) which prove to be defective in material and workmanship within (1) one year from the date of purchase may be returned freight prepaid for repair, replacement or credit. Fan and motor warranty may be voided if the system is not installed per the manufacturer's drawing.

Limited Lifetime Warranty On Aluminum Rail & Neoprene Seal

JohnDow warrants to the original purchaser that the rail and neoprene seal will be free from defects in materials and manufacture for as long as the original purchaser owns the system. The warranty does not include normal wear and tear or failure due to misuse, carelessness or any accidental cause.

Ordering Information

All orders must be placed through an authorized EuroVent distributor or sales representative.

Most orders can be shipped within a few days of the original order date. However, it is highly recommended that purchase orders be submitted at least (4) four weeks prior to the installation date to ensure complete availability of product and timely shipment.

System Design

JohnDow offers to all customers complete in-house system design services for all exhaust system requirements. JohnDow will provide a system drawing along with a complete bill of materials for each system designed. Contact our Project Manager by calling 1-800-433-0708 or fax your requirements to 1-330-753-6419.

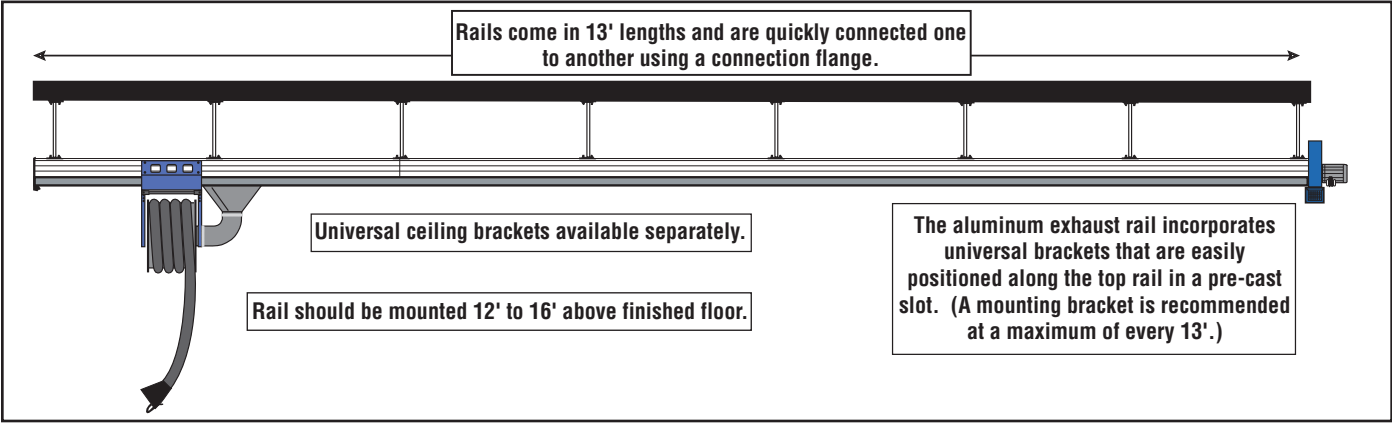
Please direct all emails to customerservice@euroventexhaust.com.

Additional Information

Additional information about EuroVent exhaust extraction systems can be obtained from our website at www.euroventexhaust.com.

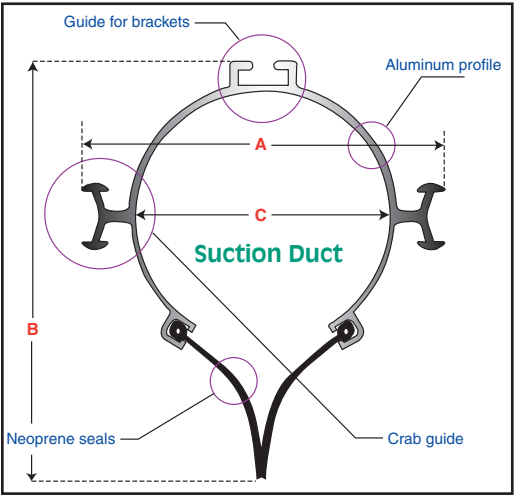
Aluminum Exhaust Rail

Rail Installation Diagram



Specifications

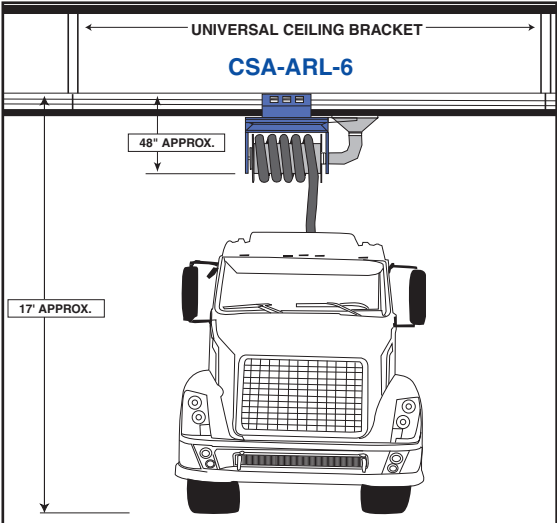
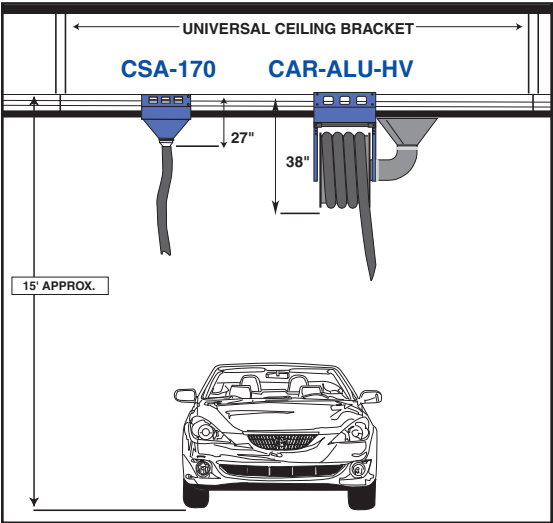
Part No.	Description	Type	Lg	(A)	(B)	(C)	Wgt
ALU-6	Aluminum Rail	Auto	6'6"	9"	10"	6"	32 lbs.
ALU-13	Aluminum Rail	Auto	13'	9"	10"	6"	64 lbs.
ALU-6HD	Aluminum Rail	Truck	6'6"	10-1/2"	11-1/2"	7-1/2"	41 lbs.
ALU-13HD	Aluminum Rail	Truck	13'	10-1/2"	11-1/2"	7-1/2"	82 lbs.
2076-ESE	Neoprene Seal	Shipped with each rail.					



Two 1/2" x 1-1/2" structural bolts (including hex nut and washer) are shipped with each rail.

Gaps in the neoprene seal where they are spliced together must be sealed to ensure proper system performance.

A seal kit is provided with each system order which includes a patch, rubber prep and cement.



Aluminum Rail Accessories

Rail Flanges

Rail Connecting Flange

Used for connecting aluminum rails together.

Automotive

No. TL-170A

HD Truck

No. TL-230A



Flange Stop

Installed at the end of a rail system run.

Automotive

No. FL-170A

HD Truck

No. FL-230A



Duct Connecting Flange

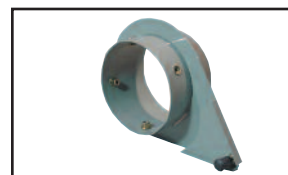
Connects exhaust rail to other ducting.

Automotive

No. FCL-170A

HD Truck

No. FCL-230A



Fan Connecting Flange

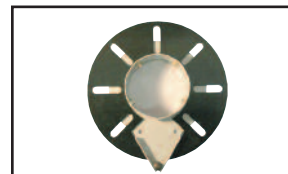
Connects "rail-mount" fans to exhaust rail. Only for use on Model No. AF15 fans.

Automotive

No. FCA-170A

HD Truck

No. FCA-230A



Duct Connections

Rail Vent-Tap Assembly

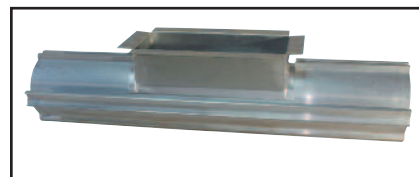
The Rail Vent-Tap Assembly makes it easy to connect ducting to the middle of any EuroVent installation with a number of options for venting the system to the exhaust fan and to the outside. A 3-ft section of the aluminum rail is already slotted and fitted with a 5-3/4" x 14" flanged opening for ease of installation. The assembly will accept custom ducting or the factory designed connections shown below. The rail is installed using the TL170A rail connecting flanges.

Automotive

No. ALU-3FT-VTAP

HD Truck

No. ALU-3FT-VTAP-HD



Top Duct Connection

Attaches to Rail Vent-Tap Assembly using 1/4" self-tapping screws. The connection has a 10" diameter opening and is typically used for system designs that require the exit point to be through the roof.

Automotive

No. OF-VENT-TOP

HD Truck

No. OF-VENT-TOP-HD



Side Duct Connection

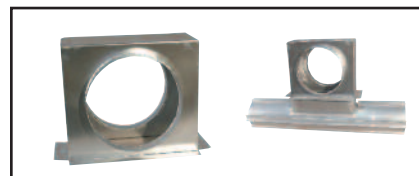
This connection is typically used to tie two or more system runs together and where the exit point is through a sidewall. Vent has a 10" diameter opening. It attaches to the ALU-3FT-VTAP using self-tapping 1/4" screws.

Automotive

No. OF-VENT-SIDE

HD Truck

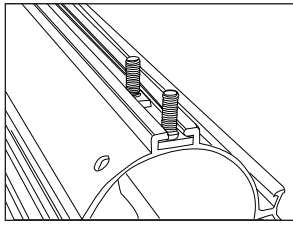
No. OF-VENT-SIDE-HD



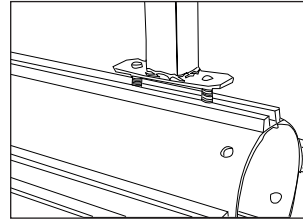
Mounting Brackets

Aluminum rails can be mounted to the ceiling or wall using the rail bolts, nuts and washers provided and the appropriate mounting brackets. Two mounting styles are available.

Bracket Attachment Diagram



Rails are mounted by inserting the 1/2" x 1-1/2" rail bolts into the slots on the top of the rail. Bolts can slide to any position on the rail.



Brackets are attached using the washers and nuts provided.

Universal Ceiling Brackets

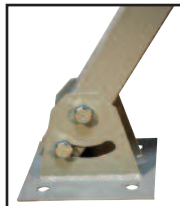
The EuroVent Universal Ceiling Bracket is designed to provide both flexibility and maximum savings in installation time and labor costs. These products are much more affordable than conventional Unistrut products, but are just as versatile. Brackets can be easily "customized" on the job.

Adjustable Ceiling Bracket

No. CB-CMA

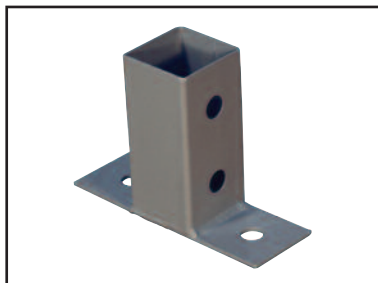


This allows for mounting on angles up to 30°. Simply clamp or bolt the bracket to any surface and secure the Mounting Tube. 6" x 6" mounting plate.

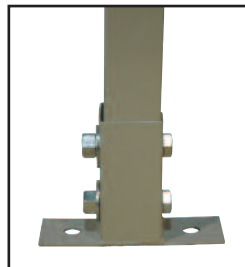


Rail Mount Ceiling Bracket

No. CB-RM

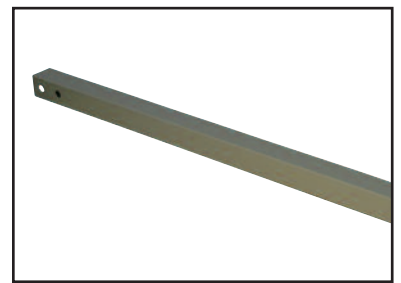


Designed for use with the "rail bolts" provided. Mounts directly to the top of the EuroVent rail. 6" x 2" mounting plate.



60" Straight Mounting Tube

No. CB-T60

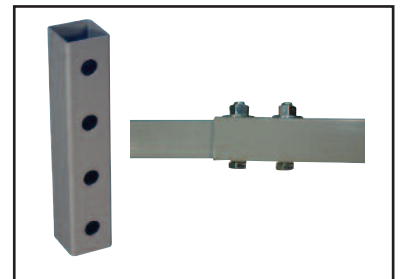


This 5' square tube has mounting holes at both ends. Can be cut to length or extended for longer applications.

Mounting Tube Connector

No. CB-TC

Makes extending the Mounting Tube quick & easy.



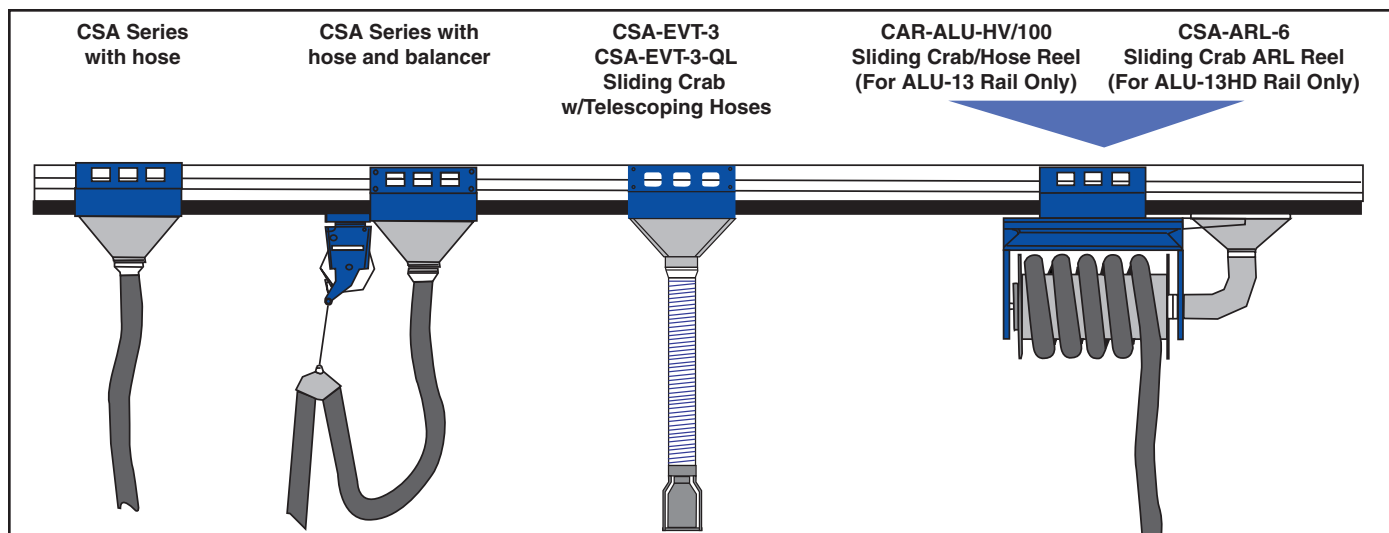
Wall Mount "L" Bracket

No. SAD-ALU-80

For mounting rail to a wall or column. Bracket is 16" x 32".

Sliding Crabs & Accessories

Sliding crabs eliminate the need for overhead drops at every service bay. They are easily positioned wherever needed. Four wheels on top of the crab carry the load while the bottom wheels guide the crab. Four options to choose from:



“High-Volume” Sliding Crab Hose Reel

- The popular choice for most exhaust system designs
- Combines the features of the CSA sliding crab with a retractable hose reel
- Hose retracts up and out of the way when not in use
- Includes 25' exhaust hose, hose stop and pull handle
- Available in OE colors upon request

Automotive - 4"
No. CAR-ALU-HV-100

HD Truck - 6"
No. CSA-ARL-6



Sliding Ventilation Crab

For use with ALU-13 and ALU-13HD rail. Easily mounts on rail.
Available for 3", 4" and 6" dia. hose. Hose not included.
Hose Balancer/Torque Reels available.

Automotive - 3"
No. CSA-170-75

Automotive - 4"
No. CSA-170-100

HD Truck - 6"
No. CSA-230-150



Sliding Crab w/Telescoping Hoses

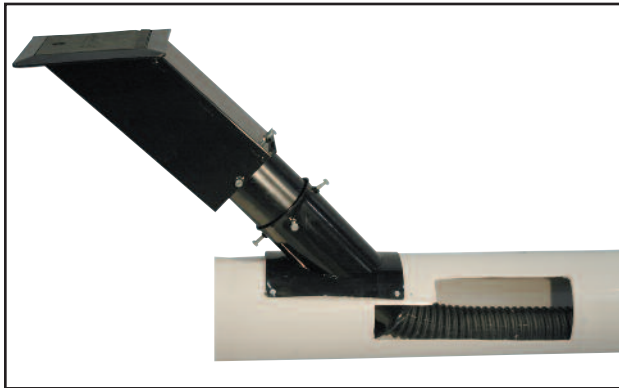
- Benefits of a sliding crab with the flexibility of the telescoping hoses
- 3-piece telescoping hose - 3"
- Complete with hose and universal tailpipe adapter
- Innovative break-away design for added protection
- Available with QuickLink™ Adapters

Automotive
No. CSA-EVT-3 (w/F475 Adapter)

Automotive
No. CSA-EVT-3-QL (w/QCN-2040 Adapter)

Underground Exhaust Systems

“Saddle Style” Disappearing Underground Exhaust System



Three-Piece telescoping design provides up to 5" of adjustability, making installation easier and faster.

- Telescoping design makes final adjustments much easier
- Makes exhaust duct depth less critical
- Eliminates need for additional extension pieces
- Flared connections allow the hose to slide smoothly
- Oblong mounting holes on saddle allow for horizontal adjustment

Three-Step Finishing Process for Superior Corrosion Protection.

- Phosphate base coat on all metal parts
- Electro-coat primer penetrates all surfaces and seams
- Powder-coat top coat provides a durable finish



Patented Rubber Door Design

- 3mm internal steel plate is encapsulated in rubber
- No moving parts
- 180° opening
- Corrosion- and oil-resistant
- Easily replaceable

Complete Underground Systems

Each system comes complete with three-piece floor assembly, 8' Crushproof Exhaust Hose, Tailpipe Adapter and Hose Insertion Guide

Systems:

No. EVU-3

3" Complete Underground System (includes 3" x 8' Crushproof Hose)

No. EVU-4

4" Complete Underground System (includes 4" x 8' Crushproof Hose)

Components:

No. EVUD-1

Replacement Door

No. EVCP-83

3" x 8' Crushproof Hose

No. EVCP-84

4" x 8' Crushproof Hose

No. EVIG-1

Hose Insertion Guide

No. EV-350

3" Tailpipe Adapter

No. EV-450

4" Tailpipe Adapter



NOTE: EuroVent® does have custom cover plates available.

Overhead Exhaust Systems

“Telescoping Type”

Affordable System Makes Installation Faster and Easier!



- **Professional Appearance**

Telescoping design eliminates winches, ropes and pulleys. Universal, clean look from bay-to-bay. Hoses are stored when not in use

- **Quality**

Made in the U.S.A. 1-year warranty

- **Affordability**

Most systems are more affordable than other professional options

- **Safety**

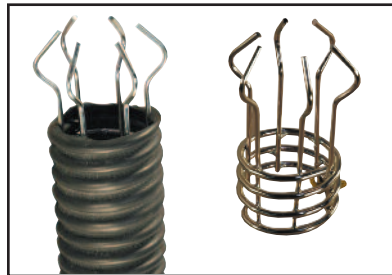
Innovative break-away design protects the vehicle being serviced, as well as the overhead exhaust system. Non-metallic tailpipe adapter protects the technician. No hoses left on the floor

- **Durable**

Robust design produced of corrosion-resistant materials that should allow for years of trouble-free use

- **Simple Installation**

The supplied duct saddle will adjust to various spiral duct sizes
System is shipped complete, ready to install



- Break-away design reconnects easily
- Requires no tools, ladders or high lifts



- Universal 3" crushproof hose and adapter
- Adapter screws onto hose. No clamps required



- QuickLink™ allows for fast and easy changes to various tailpipe adapters

**Each system comes complete with 5" Universal Adjustable Saddle,
3-Piece Telescoping Hose, Universal Oval Tailpipe Adapter and Swing Gate Assembly.**

System:

No. EVT-3

No. EVT-3-QL

3" Complete Telescoping Exhaust System

3" Complete Telescoping Exhaust System with QuickLink™ Tailpipe Adapter

Exhaust Hose

- Lightweight crushproof hose is designed specifically for the EuroVent system
- Resists abrasion and weathering
- For use with reels and sliding crabs
- Available in 25' lengths in 3", 4", 6" and 8" diameters

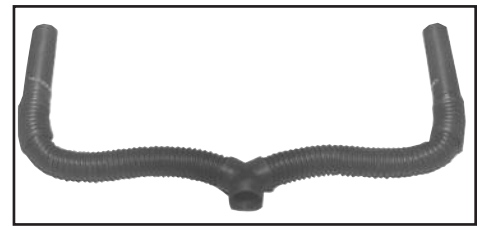


Part No.	Hose Dia.	Hose Lgth.	Temp
EH350-325	3"	25'	350°
EH350-350	3"	50'	350°
6548-75	4"	25'	350°
EH425-600	4"	25'	600°
EH625-600	6"	25'	600°
EH825-600	8"	25'	600°
EH825-1200	8"	25'	1200°

Crushproof Tubing Tailpipe Adapters & Hose



No. JDH-250 2.5" x 11' Exhaust Hose
 No. JDH-300 3" x 11' Exhaust Hose
 No. JDH-400 4" x 11' Exhaust Hose



No. JDY-303 3" Y-Hose
 No. JDY-404 4" Y-Hose
 No. JDY-606 6" Y-Hose



Splice Connector
 No. SP30



No. F475 2" Twin Oval
 No. F575 3" Twin Oval



Locking Door Port
 No. 6130059 4" Locking Door Port
 No. 6130096 5" Locking Door Port



No. F250 2-1/2" Adapter
 No. F350 3" Adapter

3" Crushproof Receiver

No. QC-3CP



Fits standard 3" crushproof hose, FLT300. Adapts to allow the use of any 4" QuickLink™ adapter, Y-hose or standard.

Tailpipe Adapters

EuroVent
QuickLink™

Universal Tailpipe Adapter Components

Universal Tailpipe Adapters

High-quality adapters are flexible and can be formed to fit most tailpipe configurations including oval and dual oval designs. Available in rubber and hi-temp silicone.



Part No.	Dia. A	Dia. B	Type
QCN-2040	4"	6"	Rubber
QCN-2041	4"	8"	Rubber
QCN-2041S	4"	8"	Silicone
QCN-6782S	4"	6"	Silicone

4" Receiver with Damper Control

No. QC-4D



Fits 4" exhaust hose and is designed to accept all 4" QuickLink™ Tailpipe Adapters. Damper control restricts air flow to prevent excessive air loss when not in use.

4" Y-Hose Assembly

No. QCY-4



Designed for dual exhaust systems - the QCY-4 uses the same Quick-Link™ connectors used on the tailpipe adapters. Makes using a Y-hose setup simple.

4" Receiver

No. TP-4-4S



Designed for retreat of competitor tailpipe adapters to be used with Quick-Link™ accessories.

QuickLink™ Organizer Rack*

No. QCR-1452



*Adapters and Y-Hose sold separately

Finding the right tailpipe adapter has never been easier with the QuickLink™ Organizer Rack.

This space saving rack mounts easily and holds all the sizes of QuickLink™ Universal Tailpipe Adapters you need to do your job safely. You'll never have to remove clamps or unscrew adapters from hoses again.

It just takes seconds to find the size and type of adapter you need from the QuickLink™ Organizer Rack. Connect it into place, and you're ready to go.

- Rack allows for easy storage and access for up to eight QuickLink™ Universal Tailpipe Adapters and one Y-Hose Assembly
- Rack measures 14" wide x 52" tall, assembled
- Rack can easily be mounted to any wall, support beam, column or post

Portable Tailpipe Adapter Stand

No. QCS-2041



For use with recessed, flush mount or hard-to-reach tailpipe designs. The stand is equipped with a QCN-2041 tailpipe adapter and is adjustable for both height and angle.

To Use:

- Place stand in front and as close to the tailpipe as possible
- Attach the exhaust hose or Y-hose
- Adjust height and angle as required





Universal Tailpipe Adapter Components

Finding and using the right tailpipe adapter to fit the variety of cars and light trucks that pull into your service bays can be difficult.

With dual exhaust systems and recessed and flush mount tailpipes it can be virtually impossible.

Even if the correct adapter is available, connecting and disconnecting from the exhaust hose can be difficult and time-consuming.



How QuickLink™ Universal Tailpipe Adapter System Works

A QuickLink™ receiver is installed on each exhaust hose of the extraction system. Each tailpipe adapter is equipped with a QuickLink™ connector.



1. Align pins on the tailpipe adapter to the slots on the receiver.



2. Push pins in the slots.



3. Turn so pins drop and lock into place.

The new EuroVent® QuickLink™ Universal Tailpipe System solves your exhaust problems so that connecting adapters is quick and easy:

- Tailpipe adapters can be connected and disconnected in seconds
- No removing clamps or unscrewing adapters from the hose
- Flexible rubber adapters fit most tailpipe configurations
High-temp silicone adapters are also available
- Special Y-hose is designed for dual exhaust applications
- Free-standing floor nozzle works with hard-to-reach and flush mount tailpipes
- Adapters are accessible and organized using the custom nozzle rack
- Fits all systems using 4" diameter exhaust hose and standard 3" crushproof hose when QC-3CP is used
- Technicians are more encouraged to use the exhaust extraction system
- The service area is a much safer work environment
- Productivity is increased

Tailpipe Adapters

Stainless Steel Adapter

For use on high-temperature applications. Vice-grip makes for a secure tailpipe connection.



No. SS-3-VG	For 3" Hose
No. SS-4-VG	For 4" Hose
No. SS-6-VG	For 6" Hose
No. SS-8-VG	For 8" Hose

NOTE: Tailpipe adapter style may vary slightly from picture.

Ford Super-Duty Adapter

For use on Ford Super-Duty and other high-temperature applications.



No. FSDA-3	For 3" Hose
No. FSDA-4	For 4" Hose
No. FSDA-6	For 6" Hose

Heavy-Duty Clamp-On Adapter

No. 5833



This rubber tailpipe adapter connects directly to the tailpipes of a variety of vehicles. A metal damper inside the adapter closes when not in use to reduce air loss. A locking clamp is used to secure the adapter to the vehicle.

Tailpipe Adapter for Recessed Tailpipes

No. QCN-EURO



The clip designed funnel is suitable for pipes with interior diameter from 30mm to 190mm, inside the bodies for example, or for pipes under the chassis, not easy to connect. Light and ergonomic, it is especially made for double exhaust pipes.

ATS Series Hose Supports

Hose supports are used with CSA series sliding crabs when hose balancer is not used. Supports are positioned on hose to keep it up off the floor when not in use. Each support comes in two parts - one hook and one hanger. Available in 3", 4" and 6" hoses.

Automotive - 3"

No. ATS-75

Automotive - 4"

No. ATS-100

HD Truck - 6"

No. ATS-150



Hose Stop

Available in three sizes.

For 3" Hose

No. FT75

For 4" Hose

No. FT100

For 6" Hose

No. FT150



Hose Balancer/Torque Reel

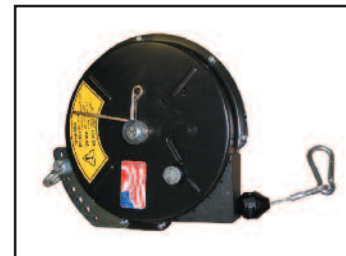
For use with all CSA series sliding crabs. Balancer mounts to sliding crab. Balancer retracts hose and keeps it off the floor when not in use.

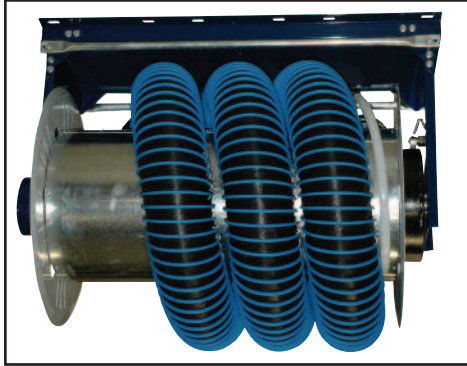
3" Hose

No. TQ-1515

4" Hose / 6" Hose

No. BG-25L





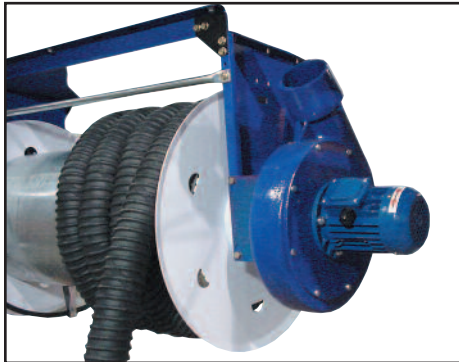
CAR Series Hose Reels

- Mechanical spring recoil reel
- Designed specifically for automotive exhaust extraction
- Reels can be mounted on wall, beam or ceiling
- Enameled finish
- Available with 3", 4" or 6" hose
- Includes duct connection flange and hose stop

Automotive 3"
3" Dia. Hose x 50'
No. CAR-ALU-HD-3

Automotive 4"
4" Dia. Hose x 25'
No. CAR-ALU-HD-4

HD Truck 6"
6" Dia. Hose x 25'
No. CAR-ALU-HD-6



CAR Reel and Fan Combination

- ARL reels can be coupled with fans to make a self-contained exhaust extraction system
- Ideal for single bay applications where a rail system is not practical
- Fan is mounted using No. FAR-10 Fan/Reel Mounting Coupler
- Includes hose stop

Fixed Hose Reels (Only)*

Hose Reel	Hose Dia.	Hose Lgth.	
CAR-ALU-HD-3	3"	50'	
CAR-ALU-HD-4	4"	25'	
CAR-ALU-HD-6	6"	25'	

*Tailpipe adapters sold separately

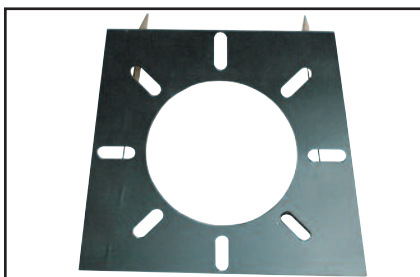
Fixed Hose Reels & Fan Combination**

Hose Reel	Hose Dia.	CFM (Max)	Fan / HP
CAR-ALU-HD-3	3"	150	1.0
CAR-ALU-HD-4	4"	300	1.0
CAR-ALU-HD-6	6"	750	1.0

**AF15 Exhaust fan required, sold separately

**FAR-10, Fan/Reel flange required, sold separately

**Tailpipe adapters sold separately



Fan/Reel Flange

Used to attach fans to CAR series hose reels.

No. FAR-10

Motor Starters

- Available upon request
- Manual or magnetic starters
- Combination starters (starters w/disconnect)
- On/Off push button
- NEMA Type 1 enclosure (STD)
- Other NEMA enclosures are available
- Selector switches
- Timers
- Disconnects

No. 5HP460V-3

No. 5HP460V-3-T
(with timer)



Fan Flex Connection

Reduces vibration from the fan to the ductwork.

No. FAN-FLEX-6	6"
No. FAN-FLEX-8	8"
No. FAN-FLEX-10	10"
No. FAN-FLEX-12	12"
No. FAN-FLEX-14	14"
No. FAN-FLEX-16	16"



QBCS Series Fan Duct Transition Fitting

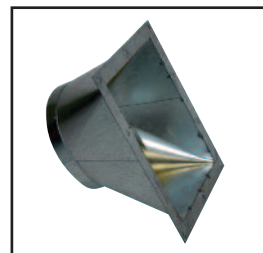
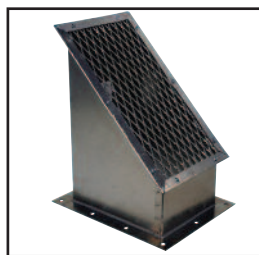
Duct fitting that transitions from the fan inlet diameter to the main duct diameter.

No. QBCS-IN Inlet



Duct fitting that transitions from the rectangular fan outlet to the main duct diameter (for outdoor mounted fans, a 45° hood with birdscreen is provided).

No. QBCS-OUT Outlet



Variable Frequency Drive

No. VFD

- Control fan speed
- NEMA 1
- UL 508C, CE, CSA
- Overload protection



Fans & Fan Accessories

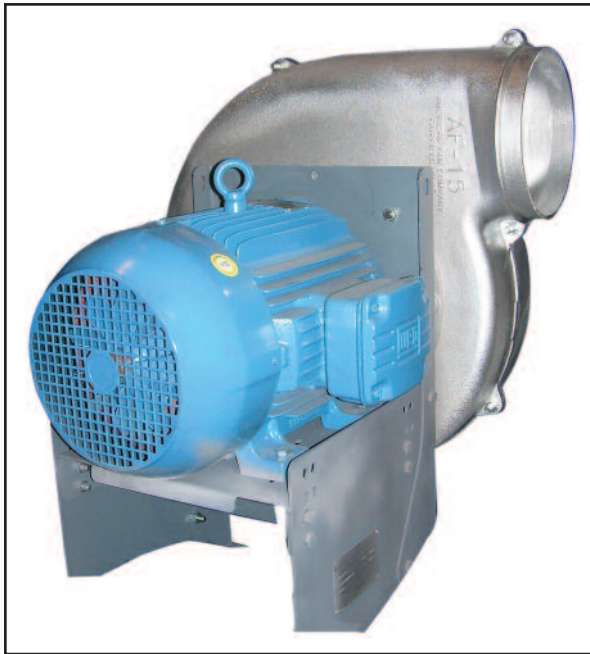
System requirements must be properly calculated in order to select the proper fan type and size. Failure to do so can result in poor system performance and/or premature fan wear. Please consult the factory representative for proper fan selection.

- All fans are American made
- UL Approved for indoor & outdoor applications
- Air and sound performance tested prior to shipment (AMCA-210-85 & 300-85)
- Rugged, lightweight and rustproof cast aluminum construction
- Direct drive models offer quiet operation and are maintenance-free
- Belt-drive models offer system performance flexibility
- Three-phase motors are wired tri-voltage (208V/230V/460V)
- Single-phase motors are wired dual voltage(120V/230V)

Fans and configuration of fans can vary depending on applications

Optional Accessories-Available Upon Request

- Inlet/Outlet Flex Connections
- Vibration Isolators
- Fan Mounting Base (Wall or Floor)



**No. AF-15
Direct Drive**



**No. QBCS
Belt Drive**

Part No.	Drive	CFM Range
AF-15	Direct Drive	0-1000
AF-15-BD	Belt Drive	0-1000
QBCS-122-DD	Direct Drive	1000-1800
QBCS-122	Belt Drive	1000-2000
QBCS-135-DD	Direct Drive	1800-2700
QBCS-135	Belt Drive	1800-2800
QBCS-150	Belt Drive	2300-3000
QBCS-165-DD	Direct Drive	2800-3500
QBCS-165	Belt Drive	2800-3700
QBCS-182	Belt Drive	3700-4800



WindStorm™ Fans improve productivity as they cool the space in the summer and make it warmer and more comfortable in the winter.

Fan Facts:

- Creating a breeze of 3 m.p.h. will lower the ambient temperature by 6 -7 degrees
- For every degree you lower the thermostat, there will be a 4 - 6% savings on your heating bill
- A single 16 ft. diameter WindStorm™ Fan will improve the indoor air quality for 5,000 square feet
- Due to our superior blade design, WindStorm Fans use less energy to move the same amount of air as compared to other HVLS fans (high volume/low speed)
- The return on investment starts with a lower price and continues with using less energy

Fan Specifications:

- Available Sizes – 8 ft., 12 ft., 16 ft. and 20 ft.
- Offered in 208-230V and 460V inputs
- Variable speed drive included allows the fans to be set at a desired speed
- Available in black, yellow, blue, red, green and white in all (4) sizes.

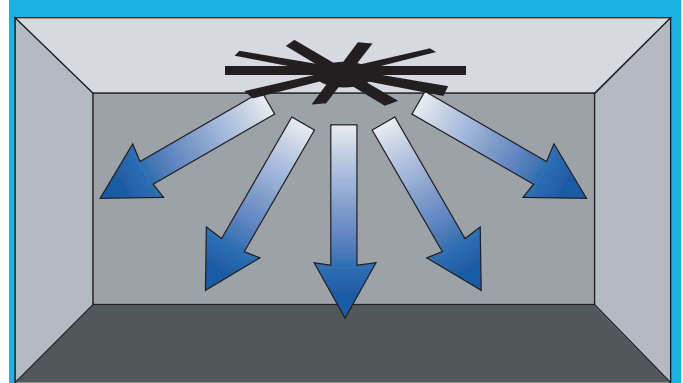
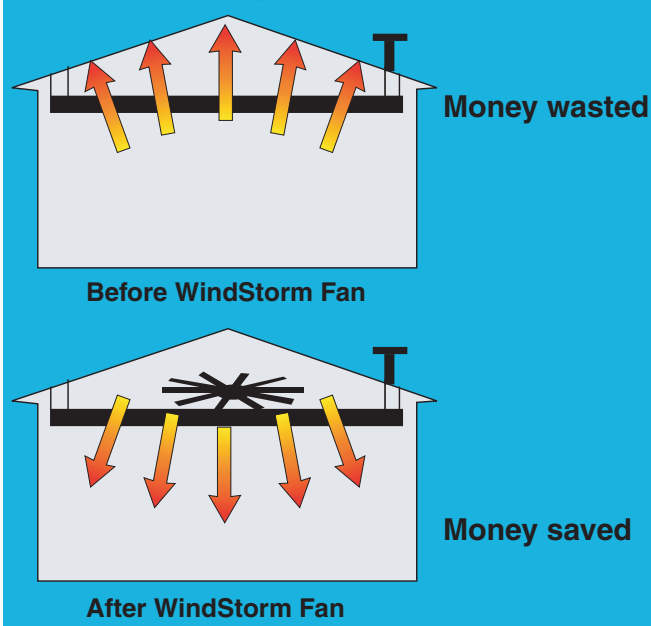
A WindStorm™ Fan Can:

- Reduce energy consumption
- Reduce heating and cooling costs
- Create a cooling breeze in summer
- Push warm air back down to the work area in winter
- Improve indoor air quality and improve workplace comfort
- Replace inefficient small ceiling fans

Fan Diameter Feet (meters)	Motor	Motor FLA @ 230V	CFM
8 Ft. (2.44m)	.05	1.92	52,010
12 Ft. (3.65m)	.05	1.92	86,324
16 Ft. (4.87m)	.05	1.92	123,791
20 Ft. (6.09m)	1.0	3.24	193,214

Fan Size	Black	Yellow	Blue	Red	Green	White	Motor
8'	WS-8FBK	WS-8FYL	WS-8FBL	WS-8FRE	WS-8FGR	WS-8FWT	PH-0.5HP
12'	WS-12FBK	WS-12FYL	WS-12FBL	WS-12FRE	WS-12FGR	WS-12FWT	PH-0.5HP
16'	WS-16FBK	WS-16FYL	WS-16FBL	WS-16FRE	WS-16FGR	WS-16FWT	PH-0.5HP
20'	WS-20FBK	WS-20FYL	WS-20FBL	WS-20FRE	WS-20FGR	WS-20FWT	PH-1.0HP

Winter heating with WindStorm Fans



Controller Features

- **Simple to set up:** The digital speed setting device, with integrated display, makes the VFD configuration fast and easy
- **Simple to use:** The fan controller features an easy-to-read, easy-to-use control panel
- **Simple to keep:** The high reliability, microprocessor controlled VFD is designed and built for long trouble-free operation
- **Robust design:** The VFD is capable of 150% torque for one minute for acceleration
- **Quiet Operation:** The carrier frequency can be set up to 14.5KHz for whisper quiet operation
- **Industrial Rating:** The VFD is designed to operate in environments from -10°C (14°F) up to 40°C (122°F)
- **Helpful Diagnostics:** The VFD has a fault history recorder and can display the last four faults or alarms

Variable Speed Controller

Your Windstorm Fan is controlled by a state-of-the-art industrial variable frequency drive (VFD). This allows you to adjust the speed of the fan to the perfect speed for your installation and operating conditions.

Industrial NEMA 1 steel enclosure offers a neat clean installation, protection for the VFD and easy access for operators.

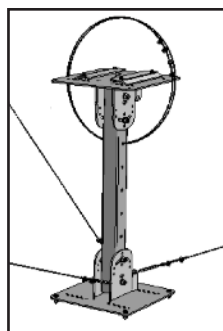
These drives are offered in a variety of input voltages and phase choices, ensuring that we have the right one for you.

Input power choices include:

- 1 phase 115 VAC
- 1 phase 208-230 VAC
- 3 phase 208-230 VAC
- 3 phase 460 VAC

Mounting Extensions

No. WS-EX37.5	36" Extension
No. WS-EX73.5	72" Extension



Variable Frequency Drives



Item No.	Description
No. VFD-.5HP-1-230V	1 Phase 208-230 VAC for .5 HP
No. VFD-.5HP-3-230V	1 Phase 208-230 VAC for 1.0 HP
No. VFD-.5HP-3-460V	3 Phase 208-230 VAC for .5 HP
No. VFD-1HP-1-230V	3 Phase 208-230 VAC for 1.0 HP
No. VFD-1HP-3-230V	3 Phase 460 VAC for .5 HP
No. VFD-1HP-3-460V	3 Phase 460 VAC for 1.0 HP

Portable Exhaust Extraction Systems

Mobile, Adjustable, Adaptable and Cost-Effective

This easy-to-use portable exhaust extraction system is a practical and affordable solution for effectively removing toxic exhaust fumes from auto repair facilities, motorcycle shops, small engine repair shops and other work areas where toxic fume removal is needed.



Model No. EV-5100

- Positioned next to the vehicle, the high-output suction fan captures fumes and discharges them safely up to 30' away, using the hose provided
- 3/4-hp fan produces 330 cfm air flow
- Uses standard 110V current
- Fan is mounted in a tough, integrally molded polyethylene "flow thru" case
- Mobile base makes the EV-5100 easy to position behind the vehicle or move around the shop
- Height position is controlled by a quick-release spring-loaded cam lock
- 5" discharge hose diameter for optimal exhaust flow
- Not for use on heavy-duty equipment or high-temperature applications including diesel applications



Performance, Reliability, Commitment.

Product Quality

JohnDow Industries offers quality products engineered to help our customers achieve greater work efficiencies for a variety of service applications. Our professional equipment is built to endure the rigors of professional vehicle service and maintenance.

Our Mission Performance

For over three decades, JohnDow Industries has successfully manufactured products to meet the demands of the professional vehicle service industry.

Reliability

Our four equipment brands represent the families of products that our customers can depend on. Providing safe and reliable equipment is our number one priority.

Commitment

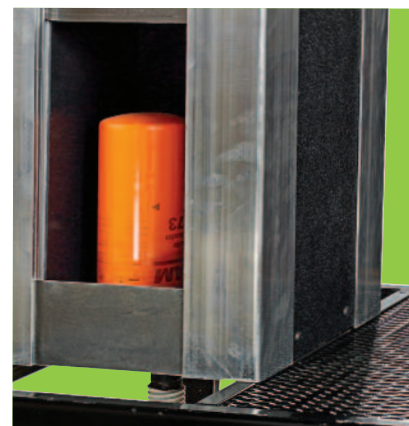
We stand by our products and our customers. It is our policy to make sure our customers receive the best service we can offer and – that our equipment performs to their expectations.

Products, Service and Solutions

This comprehensive product offering, combined with an extensive distribution network and the best and most experienced sales representatives in the country, deliver real solutions to real customer problems.

- Crew Chief Used Oil and Fluid Handling
- Fuel Chief Portable Fuel Storage and Handling
- JohnDow Automotive Service Equipment
- EuroVent Vehicle Exhaust Extraction

JohnDow products can be found through the majority of tool and equipment distributors across the country. And, our sales agencies are also available to help our customers with any question or request they may have.



**For more information on JohnDow,
call us toll-free at 1.800.433.0708
JohnDow Industries**

151 Snyder Avenue • Barberton, OH 44203

Toll-Free Phone: 800.433.0708 • Fax: 330.753.6419

Web: www.johndow.com • E-mail: customerservice@johndow.com



Performance, Reliability, Commitment.

**For more information on JohnDow,
call us toll-free at 1.800.433.0708.**

JohnDow Industries

151 Snyder Avenue • Barberton, Ohio 44203
Toll-Free Phone: 800.433.0708
Fax: 330.753.6419
web: www.euroventexhaust.com
e-mail: customerservice@johndow.com



Approved by the following Vehicle Manufacturers:

