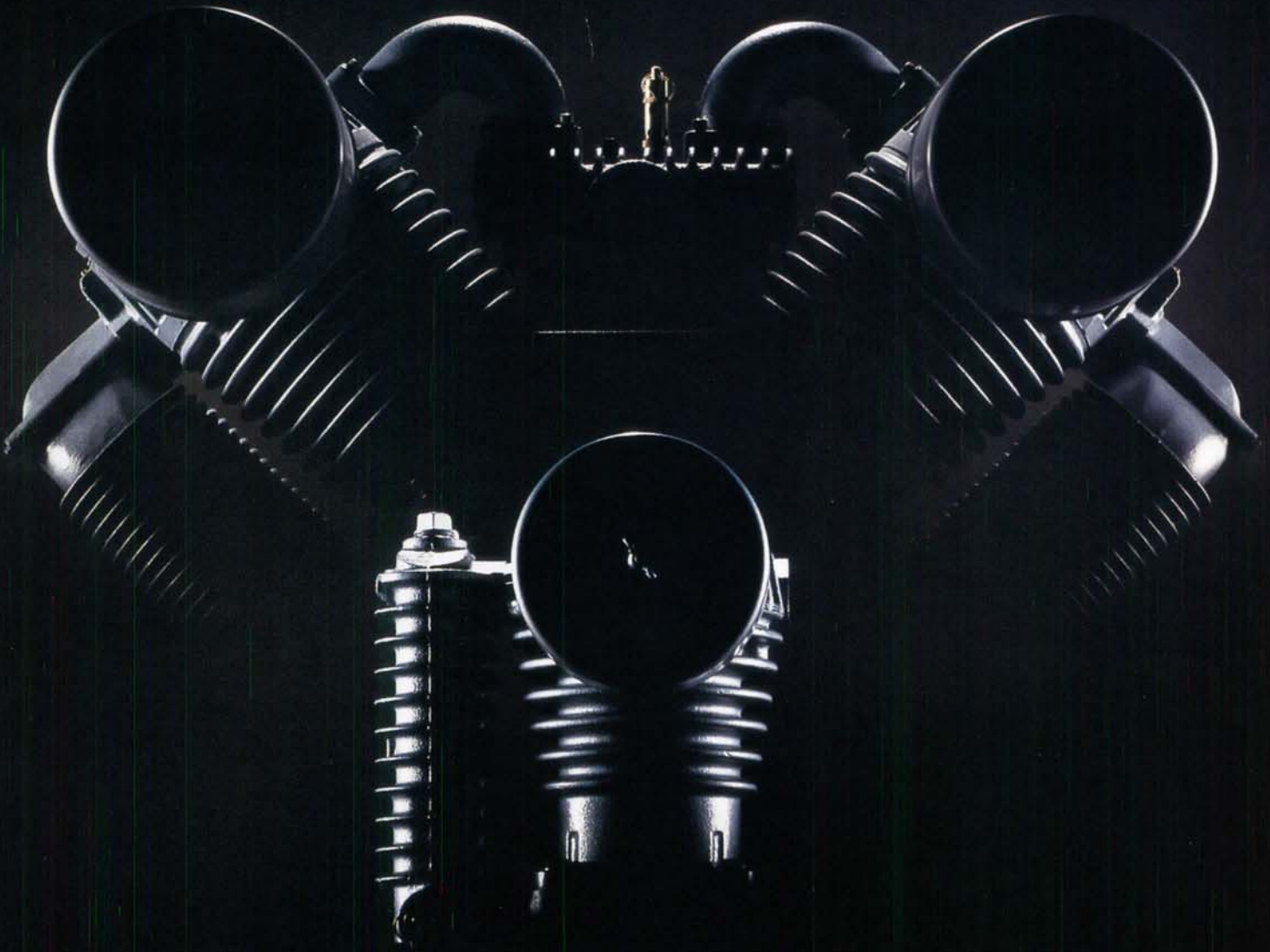


SAYLOR-BEALL

INDUSTRIAL QUALITY AIR COMPRESSORS



COMMITMENT TO QUALITY

QUALITY SAVES MONEY

Cast iron, reciprocating air compressors have been the standard bearer of SAYLOR-BEALL's business since 1915. All products are manufactured to provide many years of efficient, trouble-free service. This commitment to quality reduces the cost of owning and operating a SAYLOR-BEALL air compressor.

DESIGN & ENGINEERING

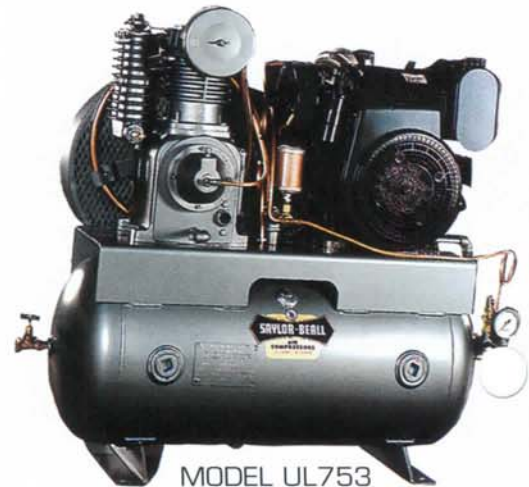
Quality and durability begin with design. SAYLOR-BEALL products use materials selected for outstanding strength, wear and heat resistant characteristics. Exacting dimensions and precision tolerances result in a highly efficient air compressor design.

MACHINING

Computer controlled, state-of-the-art equipment perform machining operations with extreme accuracy. In addition, modern quality control procedures continuously monitor the machining process.



MODEL PL92520
25 hp.
200 gal. tank
with optional
pressure lubrication



MODEL UL753
13 hp. gasoline
30 gallon tank



ASSEMBLY

SAYLOR-BEALL air compressors are assembled by skilled employees who are dedicated to the standards of precision and workmanship that customers have come to expect. After final assembly every compressor is tested to ensure that it meets rigid standards of product quality.

AMERICAN MADE

At SAYLOR-BEALL "American Made" has always been a source of great pride. The entire staff: managers, engineers, manufacturing employees, and the sales and service team are committed to providing customers with the best air compressors available.

SERVICE AND TECHNICAL SUPPORT

The SAYLOR-BEALL name means you have bought more than just an Air Compressor—you have purchased the full support of an experienced air compressor company. SAYLOR-BEALL stands behind every unit with a comprehensive warranty, as well as complete service and technical support. A network of active distributors throughout the U.S. and Canada assures convenient service and parts availability.

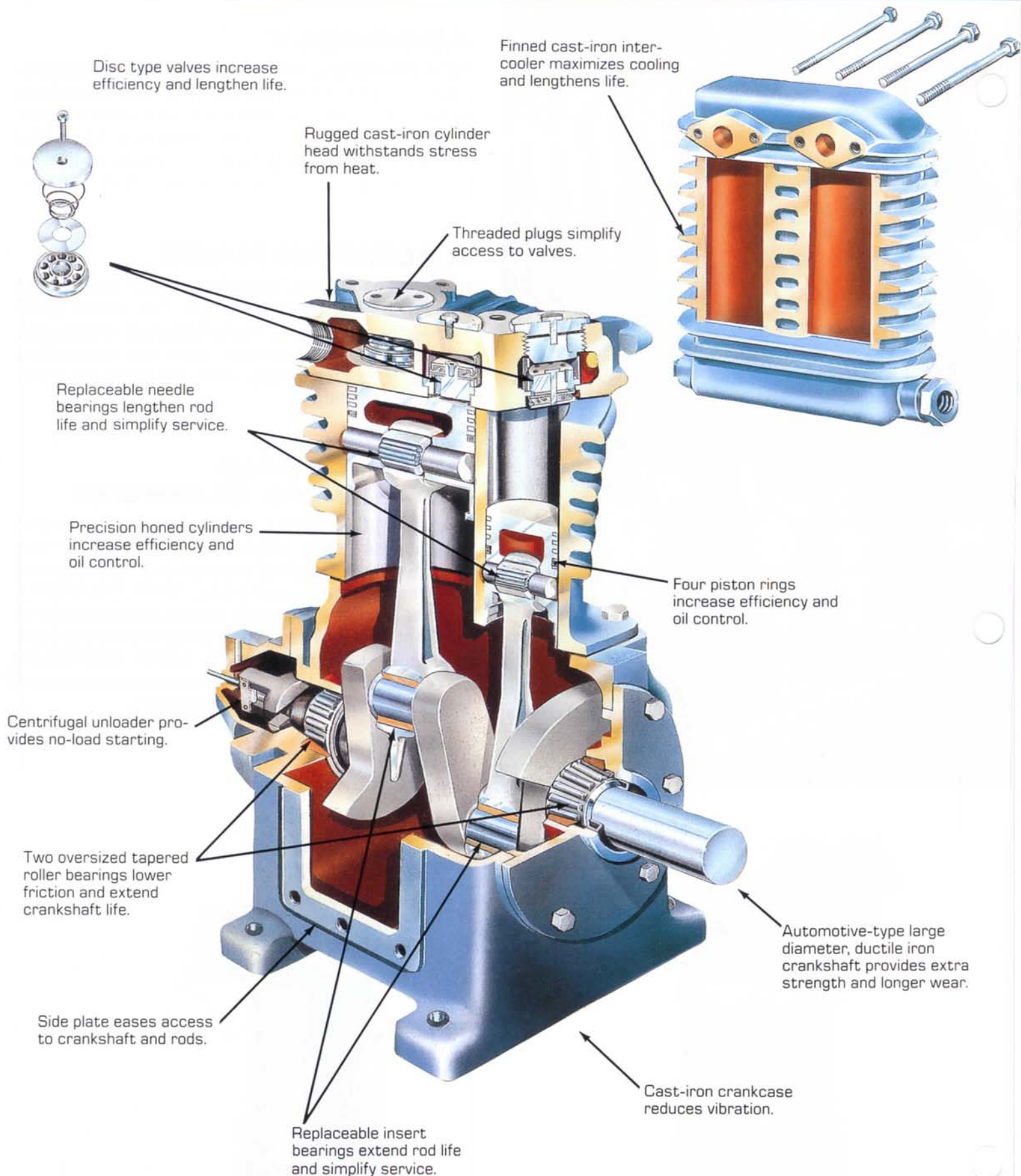


MODEL VT755-120
10 hp.
120 gallon vertical tank



MODEL VT735-80
5 hp.
80 gallon vertical tank

WHAT MAKES A SAYLOR-BEALL AIR COMPRESSOR?



**ALL COMPRESSORS ARE AVAILABLE WITH EITHER
SPASH LUBRICATION OR PRESSURE LUBRICATION**

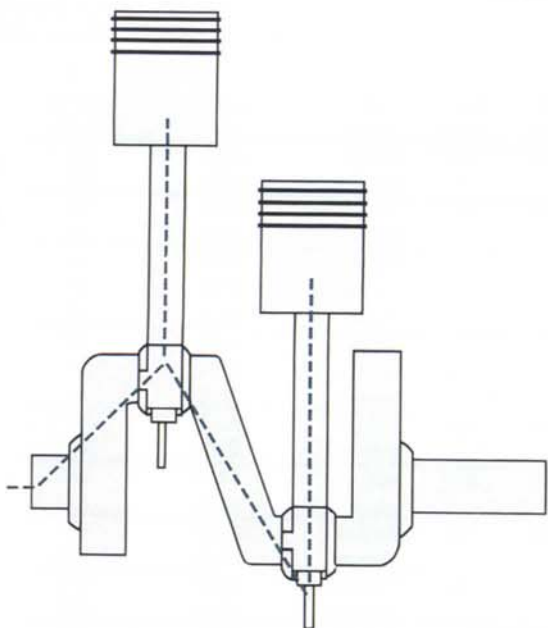
PRESSURE LUBRICATED AIR COMPRESSORS

The design of SAYLOR-BEALL's pressure lubricated air compressors is especially well suited for industrial environments where extreme operating conditions demand excellence in air compressor design and quality.

High-temperature environments, high duty-cycle service, and applications where other forms of lubrication are unacceptable indicate the need for pressure lubricated systems.

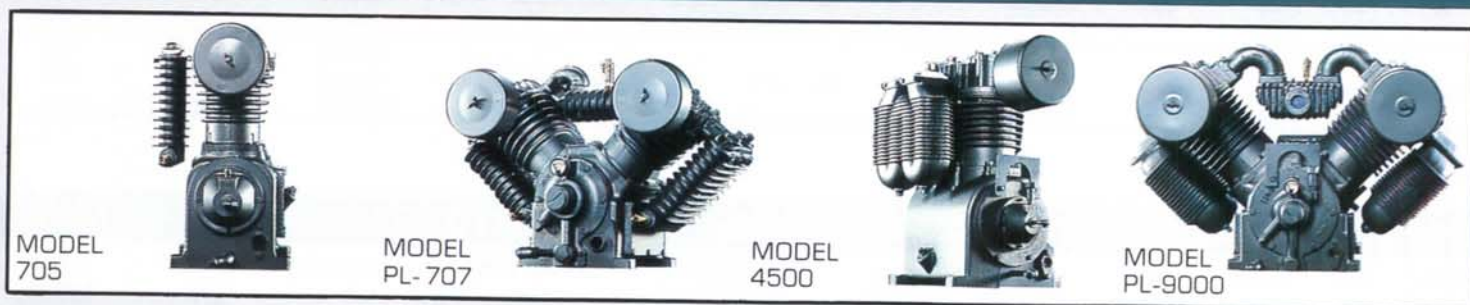
A gear type rotary oil pump mounted at the end of the crankshaft, coupled with rifle drilled crankshaft and connecting rods provide pressurized oil flow to the parts of the compressor that most need lubrication—the crankshaft, connecting rods and piston pins. This system dramatically increases the service life of the compressor.

All SAYLOR-BEALL air compressors are available with optional pressure lubrication.



AIR COMPRESSOR SPECIFICATIONS

PUMPS



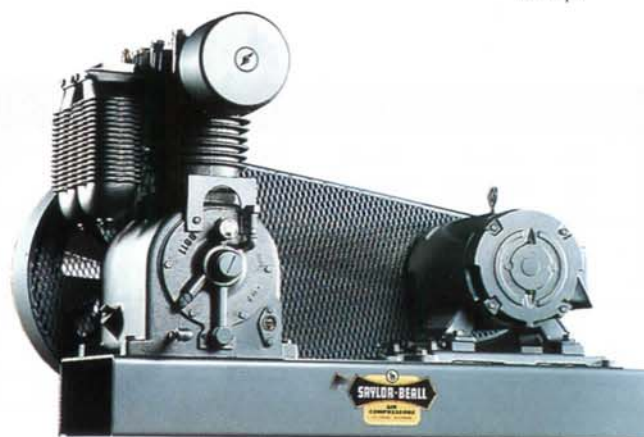
HORSE POWER RANGE	SPLASH LUBRICATED PUMP MODEL	PRESSURE LUBRICATED PUMP MODEL	— AT MAX HP —						BORE IN. DIA.	STROKE IN.	NO. CYL.	DIMENSIONS IN LxWxH	BOLT DOWN L X W IN.	APPROX. SHIPPING WT. LBS.
			— 100 PSI RATING —			— 175 PSI RATING —								
			RPM	CFM DISPL.	CFM DELVD.	RPM	CFM DISPL.	CFM DELVD.						
1 1/2-2	703	PL-703	540	10.5	8.3	510	10.0	7.5	3 1/2 & 1 1/8	3 1/2	2	19 1/8 x 11 1/8 x 20 1/4	7 3/4 x 9	207
3-5	705	PL-705	845	23.0	19.3	845	23.0	17.3	4 1/8 & 2 1/8	3 1/2	2	19 1/8 x 11 1/8 x 20 1/4	7 3/4 x 9	213
7 1/2-10	707	PL-707	845	46.0	36.6	845	46.0	34.4	4 1/8 & 2 1/8	3 1/2	4	21 1/8 x 26 3/4 x 17 1/8	9 1/2 x 9 1/2	311
10-15	4500	PL-4500	830	63.7	52.2	830	63.7	51.0	6 1/8 & 3 1/4	4 1/2	2	26 1/2 x 17 1/4 x 27	12 1/2 x 12 1/4	462
15-30	9000	PL-9000	830	127.4	104.5	830	127.4	101.1	6 1/8 & 3 1/4	4 1/2	4	26 1/2 x 37 1/2 x 27	12 1/2 x 12 1/4	678

MODEL X755-120



10 hp. Duplex
120 gallon tank

MODEL BPL-45150



Base mounted
15 hp.

TWO STAGE - ELECTRIC MOTOR - ASME HORIZONTAL TANK MOUNTED

MOTOR HORSE POWER	TANK CAP. GAL.	SPLASH LUBRICATED MODEL	SPLASH LUBRICATED PUMP	PRESSURE LUBRICATED MODEL	PRESSURE LUBRICATED PUMP	— 100 PSI RATING —			— 175 PSI RATING —			DIMENSIONS IN. LxWxH	BOLT DOWN L X W IN.	APPROX. SHIPPING WT. LBS.
						RPM	CFM DISPL.	CFM DELVD.	RPM	CFM DISPL.	CFM DELVD.			
1½	60	715-60	703	PL-715-60	PL-703	475	9.2	7.3	400	7.8	5.8	48x21x47	28x19	524
	80	715-80		PL-715-80								63x21x47	40x19	569
2	60	720-60	703	PL-720-60	PL-703	540	10.5	8.3	510	10.0	7.5	48x21x47	28x19	545
	80	720-80		PL-720-80								63x21x47	40x19	590
3	60	730-60		PL-730-60								48x21x47	28x19	567
	80	730-80	705	PL-730-80	PL-705	575	15.5	12.3	540	14.8	11.1	63x21x47	40x19	612
	120	730-120		PL-730-120								69x24x51	40x19	738
5	60	735-60		PL-735-60								48x21x47	28x19	583
	80	735-80	705	PL-735-80	PL-705	850	23.0	18.3	845	23.0	17.3	63x21x47	40x19	628
	120	735-120		PL-735-120								69x24x51	40x19	754
7½	80	737-80	707	PL-737-80	PL-707	515	27.9	22.2	455	24.7	18.5	63x21x47	40x19	717
	120	737-120		PL-737-120								69x24x51	40x19	845
	80	745-80	707	PL-745-80	PL-707	730	39.4	31.2	655	35.4	26.9	63x21x47	40x19	729
10	120	745-120		PL-745-120								69x24x51	40x19	855
	80	755-80	707	PL-755-80	PL-707	850	46.0	36.6	850	46.0	34.4	63x21x47	40x19	749
	120	755-120		PL-755-120								69x24x51	40x19	875
15	120	451012	4500	PL-451012	PL-4500	665	51.0	41.8	605	46.4	38.0	75x29x58	40x19	1161
	200	451020		PL-451020								78x30x63	40x19	1400
	120	451512	4500	PL-451512	PL-4500	830	63.7	52.2	830	63.7	51.0	75x29x58	40x19	1195
20	200	451520		PL-451520								78x30x63	40x19	1434
	120	91512	9000	PL-91512	PL-9000	550	84.4	72.1	480	73.7	61.2	75x29x56	40x19	1359
	200	91520		PL-91520								78x30x63	40x19	1601
25	120	92012		PL-92012								75x29x56	40x19	1404
	200	92020	9000	PL-92020	PL-9000	665	102.1	86.1	605	92.8	76.1	78x30x63	40x19	1643
	240	92024		PL-92024								85x30x63	51x22½	1858
30	120	92512		PL-92512								75x29x56	40x19	1418
	200	92520	9000	PL-92520	PL-9000	780	119.7	101.6	710	109.0	89.6	78x30x63	40x19	1657
	240	92524		PL-92524								85x30x63	51x22½	1872
30	120	93012		PL-93012								75x29x56	40x19	1439
	200	93020	9000	PL-93020	PL-9000	830	127.4	104.5	830	127.4	101.1	78x30x63	40x19	1678
	240	93024		PL-93024								85x30x63	51x22½	1893

TWO STAGE - ELECTRIC MOTOR - ASME VERTICAL TANK MOUNTED

MOTOR HORSE POWER	TANK CAP. GAL.	SPLASH LUBRICATED MODEL	SPLASH LUBRICATED PUMP	PRESSURE LUBRICATED MODEL	PRESSURE LUBRICATED PUMP	— 100 PSI RATING —			— 175 PSI RATING —			DIMENSIONS IN. LxWxH	BOLT DOWN L X W IN.	APPROX. SHIPPING WT. LBS.
						RPM	CFM DISPL.	CFM DELVD.	RPM	CFM DISPL.	CFM DELVD.			
1½	60	VT-715-60	703	VT-PL-715-60	PL-703	475	9.2	7.3	400	7.8	5.8	34x26x74	23x23	522
	80	VT-715-80		VT-PL-715-80								34x29x74	25½ x 25½	589
2	60	VT-720-60	703	VT-PL-720-60	PL-703	540	10.5	8.3	510	10.0	7.5	34x26x74	23x23	543
	80	VT-720-80		VT-PL-720-80								34x29x74	25½ x 25½	610
3	60	VT-730-60		VT-PL-730-60								34x26x74	23x23	565
	80	VT-730-80	705	VT-PL-730-80	PL-705	575	15.5	12.3	540	14.8	11.1	34x29x74	25½ x 25½	632
	120	VT-730-120		VT-PL-730-120								34x30x77	25½ x 25½	784
5	60	VT-735-60		VT-PL-735-60								34x26x74	23x23	581
	80	VT-735-80	705	VT-PL-735-80	PL-705	850	23.0	18.3	845	23.0	17.3	34x29x74	25½ x 25½	648
	120	VT-735-120		VT-PL-735-120								34x30x77	25½ x 25½	800
7½	120	VT-737-120	707	VT-PL-737-120	PL-707	515	27.9	22.2	455	24.7	18.5	44x30x75	25½ x 25½	905
	120	VT-745-120	707	VT-PL-745-120	PL-707	730	39.4	31.2	655	35.4	26.9	44x30x75	25½ x 25½	915
	10	VT-755-120	707	VT-PL-755-120	PL-707	850	46.0	36.6	850	46.0	34.4	44x30x75	25½ x 25½	935

TWO STAGE - GASOLINE ENGINE - ASME HORIZONTAL TANK MOUNTED

MOTOR HORSE POWER	TANK CAP. GAL.	SPLASH LUBRICATED MODEL	SPLASH LUBRICATED PUMP	PRESSURE LUBRICATED MODEL	PRESSURE LUBRICATED PUMP	— 100 PSI RATING —			— 175 PSI RATING —			DIMENSIONS IN. LxWxH	BOLT DOWN L X W IN.	APPROX. SHIPPING WT. LBS.
						RPM	CFM DISPL.	CFM DELVD.	RPM	CFM DISPL.	CFM DELVD.			
13	30	UL-753		UL-PL-753								45x19x43	28x13⅞	543
	60	UL-750	705	UL-PL-750	PL-705	900	24.8	18.8	800	21.6	16.2	55x21x48	28x19	634
	80	UL-758		UL-PL-758								66x21x48	40x19	686
18	30	UL-763	707	UL-PL-763	PL-707	925	50.0	38.4	825	44.6	33.4	52x30x50	28x13⅞	792
	60	UL-764	707	UL-PL-764	PL-707	925	50.0	38.4	825	44.6	33.4	58x30x50	28x19	883
	80	UL-765	707	UL-PL-765	PL-707	925	50.0	38.4	825	44.6	33.4	66x30x50	40x19	954
25	120	452512GC	4500	PL-452512GC	PL-4500	806	61.8	49.5	706	53.8	43.0	69x29x58	40x19	1205

TWO STAGE - ELECTRIC MOTOR - DUPLEX—ASME HORIZONTAL TANK MOUNTED

MOTOR HORSE POWER	TANK CAP. GAL.	SPLASH LUBRICATED MODEL	SPLASH LUBRICATED PUMP	PRESSURE LUBRICATED MODEL	PRESSURE LUBRICATED PUMP	— 100 PSI RATING —			— 175 PSI RATING —			DIMENSIONS IN. LxWxH	BOLT DOWN L X W IN.	APPROX. SHIPPING WT. LBS.
						RPM	CFM DISPL.	CFM DELVD.	RPM	CFM DISPL.	CFM DELVD.			
(2) 1½	80	X-715-80	(2) 703	X-PL-715-80	(2) PL-703	475	18.4	14.6	400	15.6	11.6	63x34x46	40x19	970
	120	X-715-120		X-PL-715-120								69x34x50	40x19	1127
	200	X-715-200		X-PL-715-200								72x51x56	40x19	1333
(2) 2	80	X-720-80	(2) 703	X-PL-720-80	(2) PL-703	540	21.0	16.6	510	20.0	15.0	63x34x46	40x19	1008
	120	X-720-120		X-PL-720-120								69x34x50	40x19	1165
	200	X-720-200		X-PL-720-200								72x51x56	40x19	1371
(2) 3	80	X-730-80	(2) 705	X-PL-730-80	(2) PL-705	575	31.0	24.6	540	29.6	22.2	63x34x46	40x19	1072
	120	X-730-120		X-PL-730-120								69x34x50	40x19	1229
	200	X-730-200		X-PL-730-200								72x51x56	40x19	1435
(2) 5	80	X-735-80	(2) 705	X-PL-735-80	(2) PL-705	850	46.0	36.6	845	46.0	34.6	63x34x46	40x19	1078
	120	X-735-120		X-PL-735-120								69x34x50	40x19	1235
	200	X-735-200		X-PL-735-200								72x51x56	40x19	1441
(2) 7½	120	X-737-120	(2) 707	X-PL-737-120	(2) PL-707	515	55.8	44.4	455	49.4	37.0	69x51x50	40x19	1429
	200	X-737-200		X-PL-737-200								72x51x56	40x19	1635
	120	X-745-120	(2) 707	X-PL-745-120	(2) PL-707	730	79.8	62.4	655	70.8	53.8	69x51x50	40x19	1437
(2) 10	200	X-745-200		X-PL-745-200								72x51x56	40x19	1643
	120	X-755-120	(2) 707	X-PL-755-120	(2) PL-707	850	92.0	73.2	850	92.0	68.8	69x51x50	40x19	1477
	200	X-755-200		X-PL-755-200								72x51x56	40x19	1683
(2) 15	200	X-451020	(2) 4500	X-PL-451020	(2) PL-4500	665	102.0	83.6	605	92.8	76.0	77x52x76	41x41	2465
	240	X-451024		X-PL-451024								90x59x76	41x41	2700
	200	X-451520	(2) 4500	X-PL-451520	(2) PL-4500	830	127.4	104.4	830	127.4	102.0	77x52x76	41x41	2533
(2) 20	240	X-451524		X-PL-451524								90x59x76	41x41	2768
	200	X-91520	(2) 9000	X-PL-91520	(2) PL-9000	550	168.8	144.2	480	147.4	122.4	77x68x73	41x41	3099
	240	X-91524		X-PL-91524								90x68x73	41x41	3334
(2) 25	200	X-92020	(2) 9000	X-PL-92020	(2) PL-9000	665	204.2	172.2	605	185.6	152.2	77x68x73	41x41	3239
	240	X-92024		X-PL-92024								90x68x73	41x41	3474
	200	X-92520	(2) 9000	X-PL-92520	(2) PL-9000	780	239.4	203.2	710	218.0	179.2	77x68x73	41x41	3349
(2) 30	240	X-92524		X-PL-92524								90x68x73	41x41	3574
	200	X-93020	(2) 9000	X-PL-93020	(2) PL-9000	830	255.0	209.0	830	255.0	202.2	77x68x73	41x41	3539
	240	X-93024		X-PL-93024								90x68x73	41x41	3774

TWO STAGE - ELECTRIC MOTOR - BASE MOUNTED

MOTOR HORSE POWER	SPLASH LUBRICATED MODEL	SPLASH LUBRICATED PUMP	PRESSURE LUBRICATED MODEL	PRESSURE LUBRICATED PUMP	— 100 PSI RATING —			— 175 PSI RATING —			DIMENSIONS IN. LxWxH	BOLT DOWN L X W IN.	APPROX. SHIPPING WT. LBS.
					RPM	CFM DISPL.	CFM DELVD.	RPM	CFM DISPL.	CFM DELVD.			
1½	B-703-1	703	BPL-703-1	PL-703	475	9.2	7.3	400	7.8	5.8	34x22x30	24½x16½	366
2	B-703-2	703	BPL-703-2	PL-703	540	10.5	8.3	510	10.0	7.5	34x22x30	24½x16½	385
3	B-705-3	705	BPL-705-3	PL-705	575	15.5	12.3	540	14.8	11.1	34x22x30	24½x16½	409
5	B-705-5	705	BPL-705-5	PL-705	850	23.0	18.3	845	23.0	17.3	34x22x30	24½x16½	425
	B-707-5	707	BPL-707-5	PL-707	515	27.9	22.2	455	24.7	18.5	45x23x24	28x16½	487
7½	B-707-7	707	BPL-707-7	PL-707	730	39.4	31.2	655	35.4	26.9	45x23x24	28x16½	522
10	B-707-10	707	BPL-707-10	PL-707	850	46.0	36.6	850	46.0	34.4	45x23x24	28x16½	535
	B-45100	4500	BPL-45100	PL-4500	665	51.0	41.8	605	46.4	38.0	50x28x34	42x20¼	843
15	B-45150	4500	BPL-45150	PL-4500	830	63.7	52.2	830	63.7	51.0	50x28x34	42x20¼	877
	B-9150	9000	BPL-9150	PL-9000	550	84.4	72.1	480	73.7	61.2	59x28x32	42x20¼	1059
20	B-9200	9000	BPL-9200	PL-9000	665	102.1	86.1	605	92.8	76.1	59x28x32	42x20¼	1101
25	B-9250	9000	BPL-9250	PL-9000	780	119.7	101.6	710	109.0	89.6	59x28x32	42x20¼	1115
30	B-9300	9000	BPL-9300	PL-9000	830	127.4	104.5	830	127.4	101.1	59x28x32	42x20¼	1136

TWO STAGE - GASOLINE ENGINE - BASE MOUNTED

ENGINE HORSE POWER	SPLASH LUBRICATED MODEL	SPLASH LUBRICATED PUMP	PRESSURE LUBRICATED MODEL	PRESSURE LUBRICATED PUMP	— 100 PSI RATING —			— 175 PSI RATING —			DIMENSIONS IN. LxWxH	BOLT DOWN L X W IN.	APPROX. SHIPPING WT. LBS.
					RPM	CFM DISPL.	CFM DELVD.	RPM	CFM DISPL.	CFM DELVD.			
13	ULB705-13-G	705	PL-ULB705-13G	PL-705	900	24.8	18.8	800	21.6	16.2	36x24x32	24½ x 16½	467
18	ULB707G	707	PL-ULB707G	PL-707	925	50.0	38.4	825	44.6	33.4	50x24x34	40x16½	727
25	B4525GC	4500	PL-B4525GC	PL-4500	806	61.8	49.5	706	53.8	43.0	50x26x34	40x20½	952

AT SAYLOR-BEALL QUALITY COUNTS MOST.



SAYLOR-BEALL Manufacturing Company's plant and administrative facilities, totaling in excess of 50,000 square feet, are located in St. Johns, MI. SAYLOR-BEALL has been a prime manufacturer of reciprocating air compressors since 1915, and serves the following markets:

- Industrial
- Process Control
- Petroleum Equipment
- Automotive Service
- Instrument Control
- Architectural/Engineering
- Government
- Climate Control
- And Many Others

Our reputation for quality is built on a foundation of manufacturing experience and service. We at SAYLOR-BEALL take pride in our many years as a manufacturer of air compressors.

Put our experience and know-how to work for you.

1-800-248-9001

1-989-224-2371 (Michigan)

1-989-224-8788 (Fax)

www.saylor-beall.com

WARRANTY

SAYLOR-BEALL Manufacturing Company warrants its compressors and parts when properly installed, lubricated and maintained as recommended and in accordance with good industry practice to be free from defects in material and workmanship under normal use and service. The responsibility of the Company under this warranty is limited to repair or replacement, at the Company's factory, any compressor or part thereof, which shall, within one year after date of shipment to the original purchaser, be returned to the company and which, upon examination, shall be found to be defective to the satisfaction of the Company.

This warranty shall not apply to compressors or parts which have been subjected to misapplication, misuse, negligence or accident, to compressors or parts which have been repaired or tampered with outside the Company's factory when in the judgment of the Company, it appears that the reliability or stability of the compressor or part has been effected. Ordinary maintenance, such as adjustment and cleaning of equipment or components is the responsibility of the owner. All transportation and shipping charges shall be paid by purchaser.

This warranty does not apply to electric motors or gasoline engines. These are covered by the Original Manufacturer's Warranty and should be returned by the purchaser to their authorized station for service.

This warranty is expressly in lieu of all other warranties (except of title) expressed or implied and of any other obligations or liability on the part of the Company. There are no warranties of merchantability or of fitness for a particular purpose.

SAYLOR-BEALL MANUFACTURING COMPANY



**SAYLOR-BEALL
MANUFACTURING COMPANY**

P.O. Box 40
400 N. Kibbee Street
St. Johns, MI 48879



Manufacturers of Air Compressors since 1915

Rev. 11/05