



# 4-POST LIFT OVERVIEW

- » Available in capacities from 14,000 lbs. to 60,000 lbs.
- » Open or closed front, general service and alignment packages available
- » Solid-piece column construction provide lasting durability
- » Multiple locking positions allow technicians to work at an ergonomic height
- » 14,000 lb. and 15,000 lb. models feature the highest rise (78") in the industry
- » Single-point lock release system disengages all column locks simultaneously for easy use
- » Optional accessories such as rolling jacks, air/electric workstations and oil drain pan kits available

**800-648-5438**



# 4-POST MODELS

## 4P14 SERIES | 14,000 LB. CAPACITY

- » Closed front designed to accommodate wheel work
- » Louvered approach ramps provide additional traction
- » Solid-piece column construction offers durability
- » Automatic wheel stops remove the need for wheel chocks
- » 78" rise represents the highest in the industry
- » ALI/ETL certified

## 4015 SERIES | 15,000 LB. LIFTING CAPACITY

- » Available in general service and alignment models to meet your shop's unique service needs
- » 80" rear recessed free floating slip plates offer a wider range of 4 wheel alignment capabilities
- » Recessed stainless steel turnplates provide accurate readings
- » Single-point air actuated lock release disengages column locks simultaneously for easy use
- » Choose between open or closed front and a number of optional accessories to customize your lift fleet
- » ALI/ETL certified



## 4030 SERIES | 30,000 LB. LIFTING CAPACITY

- » Available in general service and alignment models to meet your shop's unique service needs
- » Time-proven cable-driven system ensures technician safety
- » Large heavy-duty steel sheaves and cables offer durability
- » Heavy-duty cylinder provides optimal performance with minimal maintenance
- » Single-point air actuated lock release disengages column locks simultaneously for easy use
- » Choose between open or closed front, three lengths and a number of optional accessories to customize your lift fleet
- » ALI/ETL certified



Time-proven  
cable and cylinder  
design system



## HEAVY DUTY SERIES

30,000 TO 60,000 LB. LIFTING CAPACITY

- » High-tensile strength leaf chain and sealed roller bearings for maximum reliability and productivity
- » Heavy-duty cylinder for optimal performance and minimal maintenance
- » Single-point air actuated lock release disengages column locks simultaneously for easy use
- » Diamond plate anti-skid runways and ramps for positive vehicle traction



# ACCESSORIES

## ROLLING JACKS

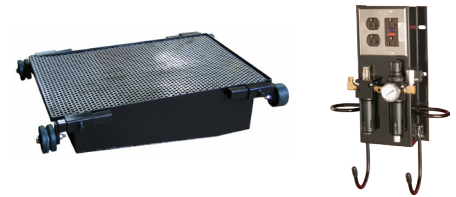
- » Available from 7,500 to 35,000 lb. capacity for easy access to brakes and wheels
- » Low-profile, adjustable heights allow for an unobstructed work space when not in use
- » Two-hand operation ensures safe use



| PART #   | DESCRIPTION  | CAPACITY    | FITS                         |
|----------|--|-------------|------------------------------|
| RJ6      | Air/hydraulic rolling jack with four 3" stack adapters | 6,000 lbs.  | 4P12 series/ 44012           |
| RJ7.5    | Air/hydraulic rolling jack with 3" stack adapters      | 7,500 lbs.  | 4P14/ 4015 series            |
| RJ9S     | Air/hydraulic rolling jack                             | 9,000 lbs.  | 44018 series only            |
| RJ9A     | Air/hydraulic rolling jack                             | 9,000 lbs.  | AR44018 series               |
| RJ15     | Air/hydraulic rolling jack                             | 15,000 lbs. | 4030 series                  |
| SAJ25    | Air-only operated rolling jack                         | 25,000 lbs. | 44040 thru 44060             |
| SAJ35    | Air-only operated rolling jack                         | 35,000 lbs. | 44050 thru 44060             |
| 10355-6  | 6" stack extensions (pair)                             | 6,000 lbs.  | RJ6                          |
| 10355-9  | 9" stack extensions (pair)                             | 6,000 lbs.  | RJ6                          |
| 10333-RJ | Sprinter adapter including pin and cradle adapters     | N/A         | RJ7.5                        |
| 40230X   | Internal air line kit for dual rolling jacks           | N/A         | 4P12XF/4015 series           |
| 40230E   | Internal air line kit for dual rolling jacks           | N/A         | 4P12EFX/4P14EFX/ 4015 series |
| 44AK18   | Internal air line kit for dual rolling jacks           | N/A         | 44018/ 44018E                |
| 44AK30   | Internal air line kit for dual rolling jacks           | N/A         | 4030/ 44030 series           |
| 44AK40   | Internal air line kit for dual rolling jacks           | N/A         | 44040 thru 44060             |

## WORKSTATION, OIL PAN, 3-PHASE ELECTRIC OPTION

| PART # | DESCRIPTION   |
|--------|---|
| 10310  | Air/electric workstation with filter/lubricator/regulator |
| 10267  | Oil drain pan kit - 32 gallon capacity                    |
| 3PH4P  | 3-Phase Power Unit Upgrades                               |
| 10342  | Hanging tool holder for 10267                             |



## RAMPS



| PART #   | DESCRIPTION                                  | LENGTH | FITS                    |
|----------|--|--------|-------------------------|
| 4030-RA  | Drive through ramp assembly                  | 36"    | 30K lb. 4-posts         |
| 4030-RA6 | Drive through ramp assembly                  | 72"    | 30K lb. 4-posts         |
| 44RK18   | Pivoting ramp kit                            | 52"    | 44018AR                 |
| 44RK30   | Pivoting ramp kit                            | 36"    | 44030 series            |
| 44RKE30  | Extended pivoting ramp kit                   | 72"    | 44030 series            |
| 44RK40   | Fixed ramp kit                               | 96"    | 44040 thru 44060 series |
| 44EK3    | Bolt-on runway extension kit                 | 36"    | 44030 series            |
| 10266    | Louvered ramp kit for drive-thru application | 36"    | 4P12/4P14/4015 series   |
| 10266L   | Ramp kit for drive-thru application          | 52"    | 4P12/4P14/4015 series   |

## BOLT-ON ALIGNMENT KITS

| PART #     | DESCRIPTION   | FITS                   |
|------------|---|------------------------|
| 40200-3D   | Bolt-on Alignment Kit - no turn plates                        | 4P12/4P14/ 4015 series |
| 40200-3DBK | Bolt-on Alignment Kit including black powder coat turn plates | 4P12/4P14/ 4015 series |
| 40200-3DSS | Bolt-on Alignment Kit including stainless steel turn plates   | 4P12/4P14/ 4015 series |
| 10500      | Turn plates with black powder coat (pair)                     | 4P12/4P14 4015/44018AR |
| 10500SS    | Turn plates with stainless steel coat (pair)                  | 4P12/4P14 4015/44018AR |
| 10500HD    | Heavy-duty turn plates with black powder coat (pair)          | 44030AR/4030AR/ 4030   |

- » Available for 14,000 lb. to 30,000 lb. capacity 4-post lifts
- » 3D alignment capable
- » Available rear slip plates and stainless steel turn plates to compliment your servicing needs





# WHEELBASE CHART



| MODEL     | CAPACITY    | WHEEL BASE | RUNWAY LENGTH | WIDTH                         | OVERALL LENGTH | RECOMMENDED BAY |
|-----------|-------------|------------|---------------|-------------------------------|----------------|-----------------|
| 4P14EFX   | 14,000 lbs. | 182.5"     | 199.25"       | 10' 10.75"                    | 20' 5.75"      | 12' x 24'       |
| 4P14XFX   | 14,000 lbs. | 210"       | 226.75"       | 10' 10.75"                    | 22' 9.25"      | 12' x 26'       |
| 4015EFO   | 15,000 lbs. | 182.5"     | 199.25"       | 11' 10" front - 11' 2.5" rear | 20' 10.25"     | 12' x 24'       |
| 4015XFO   | 15,000 lbs. | 210"       | 226.75"       | 11' 10" front - 11' 2.5" rear | 23' 1.25"      | 12' x 26'       |
| 4015EFX   | 15,000 lbs. | 182.5"     | 199.25"       | 11' 2.5"                      | 20' 5.75"      | 12' x 24'       |
| 4015XFX   | 15,000 lbs. | 210"       | 226.75"       | 11' 2.5"                      | 22' 9.25"      | 12' x 26'       |
| AR4015EAO | 15,000 lbs. | 182.5"     | 199.25"       | 11' 10" front - 11' 2.5" rear | 20' 10.25"     | 12' x 24'       |
| AR4015XAO | 15,000 lbs. | 210"       | 226.75"       | 11' 2.5"                      | 23' 1.25"      | 12' x 26'       |
| AR4015EAX | 15,000 lbs. | 182.5"     | 199.25"       | 11' 2.5"                      | 20' 5.75"      | 12' x 24'       |
| AR4015XAX | 15,000 lbs. | 210"       | 226.75"       | 11' 2.5"                      | 22' 9.25"      | 12' x 26'       |
| 44018     | 18,000 lbs. | 194"       | 204"          | 11' 6.125"                    | 21' 7"         | 14' x 25' 6"    |
| 44018E    | 18,000 lbs. | 230"       | 240"          | 11' 9.5"                      | 24' 4"         | 14' x 28' 6"    |
| 44018AR   | 18,000 lbs. | 236"       | 257.375"      | 11' 9.5"                      | 25' 11.5"      | 15' x 30'       |
| 4030SFX   | 30,000 lbs. | 244.5"     | 268.5"        | 14' 4.75"                     | 25' 8"         | 28' x 17'       |
| 4030EFX   | 30,000 lbs. | 281"       | 305"          | 14' 4.75"                     | 28' 8"         | 31' x 17'       |
| 4030XFX   | 30,000 lbs. | 317"       | 341"          | 14' 4.75"                     | 31' 8"         | 34' x 17'       |
| 4030SAX   | 30,000 lbs. | 244.5"     | 268.5"        | 14' 4.75"                     | 25' 8"         | 28' x 17'       |
| 4030EAX   | 30,000 lbs. | 281"       | 305"          | 14' 4.75"                     | 28' 8"         | 31' x 17'       |
| 4030XAX   | 30,000 lbs. | 317"       | 341"          | 14' 4.75"                     | 31' 8"         | 34' x 17'       |
| 4244040   | 40,000 lbs. | 310"       | 290"          | 17' 1.25"                     | 36'            | 26' 1" x 42' 4" |
| 44040E    | 40,000 lbs. | 370"       | 350"          | 17' 1.25"                     | 41'            | 26' 1" x 47' 4" |
| 44040X    | 40,000 lbs. | 430"       | 410"          | 17' 1.25"                     | 46'            | 26' 1" x 52' 4" |
| 44050     | 50,000 lbs. | 310"       | 290"          | 17' 1.25"                     | 36'            | 26' 1" x 42' 4" |
| 44050E    | 50,000 lbs. | 370"       | 350"          | 17' 1.25"                     | 41'            | 26' 1" x 47' 4" |
| 44050X    | 50,000 lbs. | 430"       | 410"          | 17' 1.25"                     | 46'            | 26' 1" x 52' 4" |
| 44060     | 60,000 lbs. | 310"       | 290"          | 17' 1.25"                     | 36'            | 26' 1" x 42' 4" |
| 44060E    | 60,000 lbs. | 370"       | 350"          | 17' 1.25"                     | 41'            | 26' 1" x 47' 4" |
| 44060X    | 60,000 lbs. | 430"       | 410"          | 17' 1.25"                     | 46'            | 26' 1" x 52' 4" |

For more information, contact your authorized Challenger Lifts distributor:

800-648-5438 | 502-625-0700 | Fax: 502-625-0711 | Email: [sales@challengerylfts.com](mailto:sales@challengerylfts.com)  
2311 South Park Road | Louisville, KY 40219



Challenger Lifts, Inc. reserves the right to make changes to specifications without notice and without making changes retroactive. Unloading, installation and oil not included.